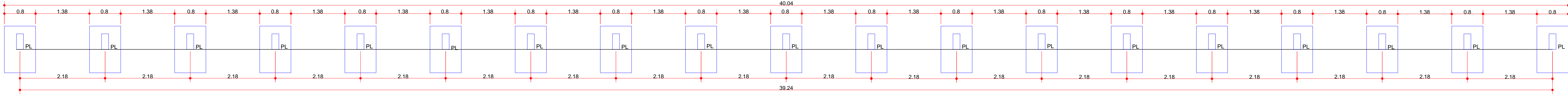
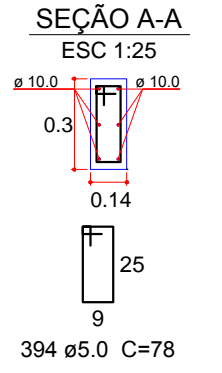
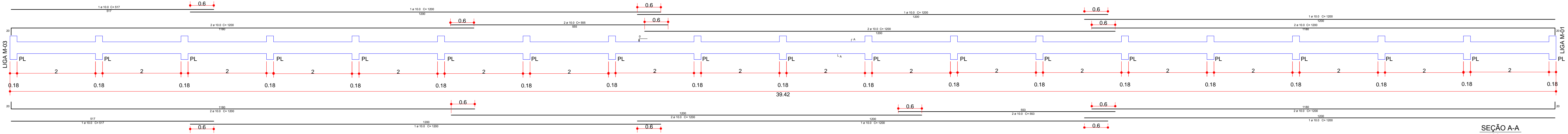


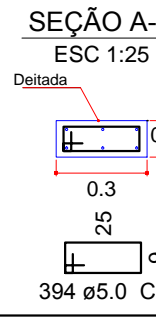
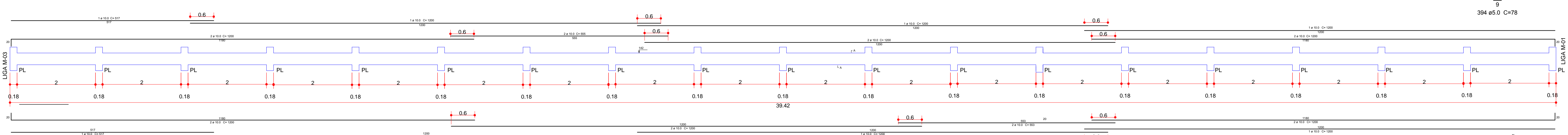
Locação Fundação - M 02
 ESC 1:50



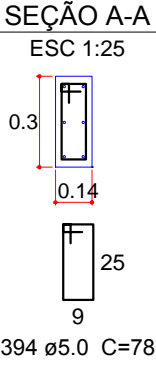
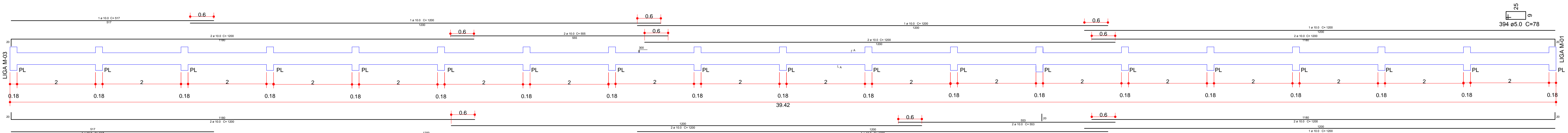
Viga Baldrame - M 02
 ESC 1:50



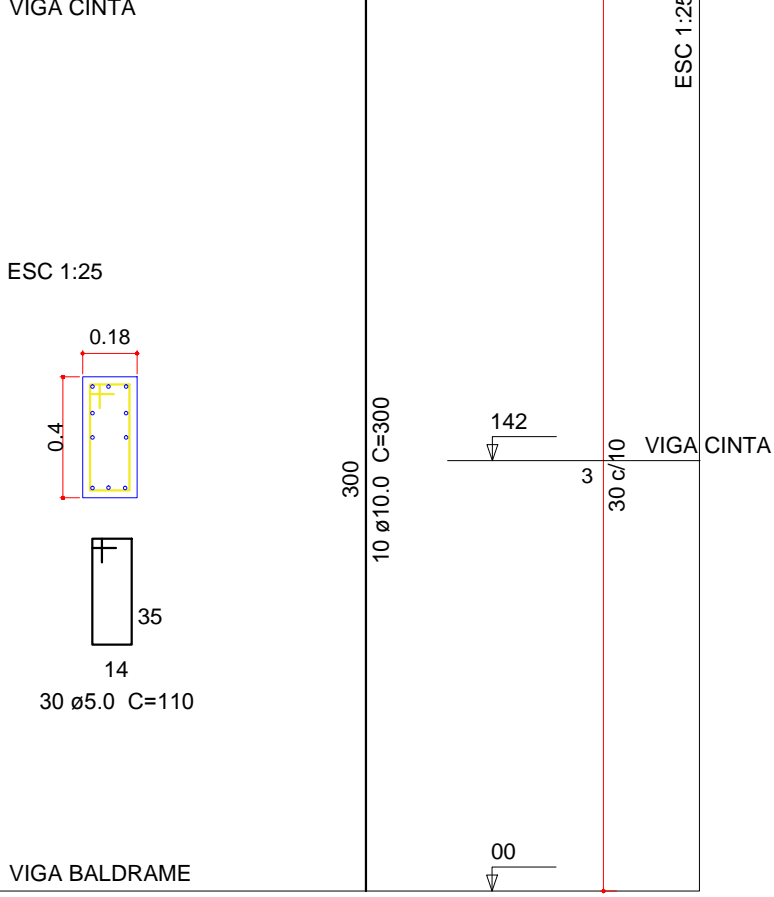
Viga Intermediaria - M 02
 ESC 1:50



Viga Cinta - M 02
 ESC 1:50



PILAR



Resumo do aço
 Pilares M - 02

AÇO	DIAM	C.TOTAL (m)	PESO (kg)
CA50	10.0	570,00	351,69
CA60	5.0	627,00	96,56
PESO TOTAL			
CA50	351,69		
CA60	96,56		

Vol. de concreto total (C-25) = 4,10 m³
 Área de forma total = 66,12 m²

Resumo do aço Vigas
 M - 02

AÇO	DIAM	C.TOTAL (m)	PESO (kg)
CA50	10.0	745,50	459,97
CA60	5.0	921,96	141,98
PESO TOTAL			
CA50	459,97		
CA60	141,98		

Vol. de concreto total (C-25) = 4,97 m³
 Área de forma total = 64,64 m²
 Vol. de escavação= 1,36 m³

PREFEITURA MUNICIPAL

Administração 2021 / 2024

ADMINISTRAÇÃO	RESP. TÉCNICO	PRANCHAS
		04/06
PROJETO		ESTRUTURAL
ÁREA		857,60m² - total 555,70m² - Alamedado 301,90m² - Muro Cont.
DATA		AGOSTO / 2021
LOTE		QUADRA
ESCALA		INDICADO
ARQUIVO		
DOIS VIZINHOS	PARANÁ	